

# EMOZIONI

---

HOT DIAMONDS

AUTUMN/  
WINTER  
2016





# Vivere il momento

Live in the moment...

Interchange your cherished collection of pendant coins, coin keepers and chains to create A LOOK THAT TRULY REFLECTS your ever-changing emotions.



# ontents

autumn/winter 2016

02	INTRODUCTION	44	QUATTRO
06	RINGS	56	CALEIDOSCOPIO
12	EARRINGS	62	SCINTILLA
18	BANGLES	66	EPOCA BELLA
28	BRACELETS	70	PERLA
32	KEEPERS	74	CHAINS
40	COINS by collection	78	GIFTWRAP

# ings

Stunning  
rhodium plated  
and rose gold  
plated sterling  
silver rings  
will perfectly  
complement  
your Emozioni  
collection

ALL RINGS AVAILABLE  
IN SIZES K-Q. CRAFTED FROM  
STERLING SILVER WITH ROSE  
GOLD-PLATED OPTIONS



7  
EMOZIONI

# Rings



*Riflessi*  
Rose Gold Plated

ER004



*Infito*  
Rose Gold Plated

ER008



*Saturno*  
Rose Gold Plated

ER002



*Riflessi*

ER003



*Infito*

ER007



*Saturno*

ER001

# Rings



*Laghetto  
Pink*  
ER014



*Laghetto  
Black*  
ER013



*Laghetto  
Azure*  
ER015



*Bouquet  
Black*  
ER010



*Bouquet  
Champagne*  
ER009



*Bouquet*  
ER011



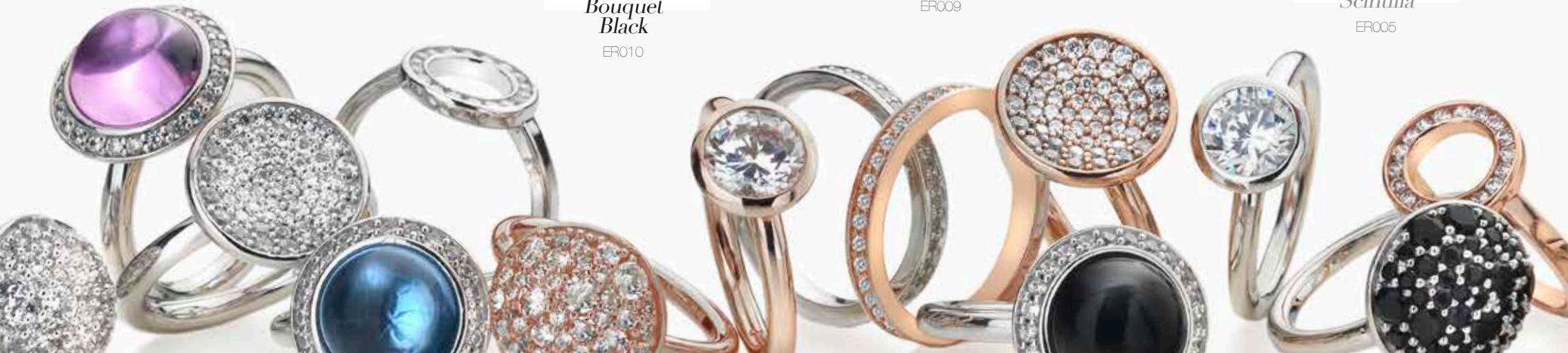
*Scintilla*  
ER005



*Bouquet  
Rose Gold Plated*  
ER012



*Scintilla  
Rose Gold Plated*  
ER006





# arrings

These Emozioni earrings are THE PERFECT PARTNER for your Emozioni pendant and bangle collection. Crafted from sterling silver, with rose gold-plate and yellow gold-plate options, you can be sure there is a luxurious look to complement your cherished Emozioni wardrobe.

CRAFTED FROM STERLING SILVER, WITH ROSE GOLD-PLATED AND YELLOW GOLD-PLATED OPTIONS

# Earrings

*Giove Fantasy*



DE458



*Rose Gold Plated*  
DE459

*Giove Turquoise*



DE462



*Rose Gold Plated*  
DE463

*Giove Pearl*



DE460



*Rose Gold Plated*  
DE461

*Scintilla  
Champagne*



DE454



*Rose Gold Plated*  
DE455

*Scintilla*



DE456



*Rose Gold Plated*  
DE457



# Earrings



*Pianeta*



*Yellow Gold Plated*  
DE404



*Rose Gold Plated*  
DE403



DE402

*Saturno*



*Yellow Gold Plated*  
DE410



*Rose Gold Plated*  
DE409



DE408





# angle

## Coin Carriers

Choose from a stunning array of looks from shimmering silver to glamorous gold with a TOUCH OF COLOURFUL RADIANCE. Complete your individual look with your choice of compatible 25mm coins.



THE BASE UNIT OF EVERY BANGLE IS CRAFTED FROM HIGHLY POLISHED AND DURABLE STAINLESS STEEL.

# Bangles



*Rose Gold Plated  
Ula Bangle - Plum*

DC162



*Silver Plated  
Ula Bangle - Plum*

DC158



*Rose Gold Plated  
Ula Bangle - Rose Quartz*

DC163



*Silver Plated  
Ula Bangle - Rose Quartz*

DC159



*Silver Plated  
Ula Bangle - Serenity*

DC160



*Silver Plated  
Ula Bangle - Sage*

DC161

# Bangles



*Yellow Gold Plated  
Faux Mother of Pearl Bangle*  
DC131



*Rose Gold Plated  
Faux Mother of Pearl Bangle*  
DC130



*Silver Plated  
Faux Mother of Pearl Bangle*  
DC129



*Yellow Gold Plated  
Faux Turquoise Bangl*  
DC134



*Silver Plated  
Faux Turquoise Bangle*  
DC132



*Rose Gold Plated  
Faux Turquoise Bangle*  
DC133

# Bangles

*Silver Plated  
Heart Bangle*  
DC094



*Rose Gold and Silver Plated  
Heart Bangle*  
DC096



*Silver Plated  
Bangle*  
DC107 (S) - DC127 (L)



*Rose Gold Plated  
Heart Bangle*  
DC095



*Silver Plated  
Crystal Star Bangle*  
DC143



*Yellow Gold Plated  
Crystal Star Bangle*  
DC144



*Rose Gold Plated  
Crystal Star Bangle*  
DC145



*Rose Gold Plated  
Bangle*  
DC108 (S) - DC128 (L)



*Rose Gold Plated  
Champagne Star Bangle*  
DC146



# Bangles



*Yellow Gold and Silver Plated  
Ula Bangle*  
DC099



*Rose Gold Plated  
Bangle - Black*  
DC104



*Silver Plated  
Ula Bangle*  
DC097



*Rose Gold Plated  
Ula Bangle*  
DC098

# LO

## bracelet

### Coin Carriers

Our sterling silver and rose gold plated bracelets offer entrancing ELEGANCE AND BOUNDLESS BEAUTY. Complete your individual look with your choice of compatible 25mm coins.



# Bracelets



*Sterling Silver  
Bead Bracelet*  
DL295



*Luxury  
Sterling Silver  
Bead Bracelet*  
DL296



*Sterling Silver and Rose Gold  
Plated Bead Bracelet*  
DL280



*Luxury  
Sterling Silver and Rose Gold  
Plated Bead Bracelet*  
DL282

# Keepers

Choose from OUR ELEGANT ARRAY of sterling silver and gold plate diamond keepers - each keeper will showcase your personal coin collection to perfection.

ROSE AND YELLOW GOLD KEEPERS ARE GOLD PLATE ON STERLING SILVER

Step one: Select your coin keeper  
Step two: Select your chain

Step three: Start your individual coin collection to create your unique look



+



+



=



EMOZIONT

# Keepers



*Mezzaluna  
Sterling Silver  
Keeper*



33mm  
DP613



25mm  
DP615

*Mezzaluna  
Rose Gold  
Plated Keeper*



33mm  
DP614



25mm  
DP616



35  
EMOZIONI

# Keepers

*Reversible  
Sterling Silver  
Keeper*



*Reversible  
Rose Gold  
Plated Keeper*



*Reversible  
Yellow Gold  
Plated Keeper*



# Keepers

*Emozioni  
Yellow Gold  
Plated Keeper*



33mm  
DP523



25mm  
DP522

*Emozioni  
Rose Gold  
Plated Keeper*



33mm  
DP447



25mm  
DP452

*Emozioni  
Sterling Silver  
Keeper*



33mm  
DP445



25mm  
DP450



*Capri  
Rose Gold  
Plated Keeper*



33mm  
DP484



25mm  
DP485

*Capri  
Sterling Silver  
Keeper*



33mm  
DP444



25mm  
DP448

# oins

Our wide selection of INTERCHANGEABLE COINS are all available in two sizes, 25mm and 33mm, to fit your Coin Keeper. Keep your coins together with your keeper in the luxury gift box!



ALL 25MM COINS WITH THIS SYMBOL CAN BE ATTACHED TO OUR BRACELETS AND BANGLES USING A HIDDEN LOOP THAT DROPS OUT OF THE COIN'S INTERIOR WHEN TILTED.



EMIZIONI



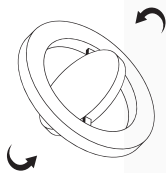
EMOZIONI  
34



# uattro

Quattro is a stunning new coin concept from Emozioni. It takes the collection to a new level, where FOUR FABULOUS LOOKS ARE DELIVERED BY ONE BEAUTIFUL COIN.

Quattro is effortlessly versatile, wonderfully crafted and extraordinarily elegant.



45  
EMOZIONI



FASHION Jewellery  
Collection OF THE YEAR 2015

VOTED BY THE UK CONSUMER (PROFESSIONAL JEWELLER SURVEY) - THANK YOU FOR VOTING FOR US!

# Quattro

*Alba e Tramonto*



33mm  
EC246



25mm  
EC252

ALTERNATIVE WAYS TO WEAR



*Estate e Primavera*



33mm  
EC250



25mm  
EC256

ALTERNATIVE WAYS TO WEAR



*Alba e Tramonto  
Rose Gold Plated*



33mm  
EC247



25mm  
EC253

ALTERNATIVE WAYS TO WEAR



*Estate e Primavera  
Rose Gold Plated*



33mm  
EC251



25mm  
EC257

ALTERNATIVE WAYS TO WEAR



# Quattro



*Autunno e Inverno*



33mm  
EC248



25mm  
EC254

ALTERNATIVE WAYS TO WEAR



*Autunno e Inverno  
Rose Gold Plated*



33mm  
EC249



25mm  
EC255

ALTERNATIVE WAYS TO WEAR



# Quattro

*Fiamme e Ghiaccio*



33mm  
EC221



25mm  
EC227

ALTERNATIVE WAYS TO WEAR



*Fiamme e Ghiaccio*  
*Rose Gold Plated*



33mm  
EC220



25mm  
EC226

ALTERNATIVE WAYS TO WEAR



# Quattro

*Giorno e Notte*



33mm  
EC222



25mm  
EC228

ALTERNATIVE WAYS TO WEAR



*Terra e Luce*



33mm  
EC218



25mm  
EC224

ALTERNATIVE WAYS TO WEAR



*Giorno e Notte  
Rose Gold Plated*



33mm  
EC223



25mm  
EC229

ALTERNATIVE WAYS TO WEAR



*Terra e Luce  
Rose Gold Plated*



33mm  
EC219



25mm  
EC225

ALTERNATIVE WAYS TO WEAR



# Quattro

## Mare e Nubi



33mm  
EC240



25mm  
EC241

ALTERNATIVE WAYS TO WEAR



## Aqua e Aria



33mm  
EC244



25mm  
EC245



## Mare e Nubi Rose Gold Plated



33mm  
EC238



25mm  
EC239

ALTERNATIVE WAYS TO WEAR



## Acqua e Aria Rose Gold Plated



33mm  
EC243



25mm  
EC242

ALTERNATIVE WAYS TO WEAR



# aleidoscopio

Intricate, extravagant and sumptuous - just a few words to describe the Caleidoscopio collection from Emozioni. From the classic but striking Fiore di Loto coins to the vibrant and sparkling Girasole designs, this is a truly unique collection that is filled with beauty, colour and radiance.

Gentle pastels and a shimmering finish create coins that are, quite simply, enchanting. THEY SAY THAT VARIETY IS THE SPICE OF LIFE, and with everything from rose gold to oxidised silver plating, there's no doubt that YOU'LL BE ABLE TO FIND A COIN THAT REFLECTS YOUR TRUE INNER SELF.



# Caleidoscopio

*Edera*  
Silver and Rose Gold  
Plated



33mm  
EC205



25mm  
EC189



*Edera*  
Oxidised Silver Plated



33mm  
EC207



25mm  
EC191



*Edera*  
Oxidised Silver and  
Rose Gold Plated



33mm  
EC206



25mm  
EC190



# Caleidoscopio



## *Girasole Black*



33mm  
EC215



25mm  
EC199

## *Prisma*



33mm  
EC213



25mm  
EC197

## *Girasole Pink*



33mm  
EC217



25mm  
EC201

## *Prisma Turquoise*



33mm  
EC214



25mm  
EC198

## *Girasole Champagne*



33mm  
EC216



25mm  
EC200

## *Prisma Azure*



33mm  
EC212



25mm  
EC196



# Scintilla

Sometimes you desire a sparkling jewel - one that turns heads and delivers scintillating joy. Choose 'Scintilla' in sparkling white or sophisticated champagne crystal and LET EMOZIONI ANNOUNCE YOUR PRESENCE.



# Scintilla



*Ice Sparkle*



33mm  
EC011



25mm  
EC049

*Champagne*



33mm  
EC171



25mm  
EC170

*Ice Sparkle Heart*



33mm  
EC030  
£39.95/€48



25mm  
EC067

*Serpente*



33mm  
EC165



25mm  
EC164

*Ice Sparkle Arc*



33mm  
EC035



25mm  
EC072

# epoca bella

ERAS OF GREAT BEAUTY AND ARTISTIC ENERGY create a timeless quality that resonates throughout many generations. Epoca Bella, a truly opulent and ostentatious collection of jewels, is a wonderful celebration of such exquisite epochs.



# Epoca Bella

*Victorian  
Silver and  
Rose Gold Plated*



33mm  
EC106



25mm  
EC126

*Time Traveller  
Rose Gold Plated*



33mm  
EC156



25mm  
EC148

*Winding Path  
Rose Gold Plated*



33mm  
EC152



25mm  
EC144



*Time Traveller*



33mm  
EC157



25mm  
EC149

*Winding Path*



33mm  
EC153



25mm  
EC145

erla

These shimmering white mother of pearl coins showcase AN ASTOUNDING NATURAL BEAUTY - each coin is utterly individual and wonderfully mesmerising, whilst among the most wearable of coins within the Emozioni collection.



# Perla

*Mother of Pearl White*



33mm  
EC020



25mm  
EC057

*Faux Turquoise*



33mm  
EC006



25mm  
EC044



EMOZIONI  
73

# hains

The Emozioni chain is an INTEGRAL ELEMENT OF YOUR COLLECTION. From classic silver belcher chains to sparkling bead chains, Emozioni presents a luxurious selection to perfectly complement your most-loved outfits.



CHAINS LENGTHS AVAILABLE: 18", 24", 30" & 35" (45CM, 61CM, 76CM & 89CM)



75  
EMOZIONI

# Chains



*Rose Gold Plated Sterling Silver  
Popcorn Chain (Thick)*

18" (45cm) 24" (61cm) 30" (76cm)  
CH037 CH060 CH038



*Rose Gold Plated Sterling Silver  
Belcher Chain*

16-18" (40-45cm) 24" (61cm) 30" (76cm)  
CH013 CH054 CH014



*Rose Gold Plated Sterling Silver  
Bead Chain*

18" (45cm) 24" (61cm) 30" (76cm)  
CH007 CH052 CH008



*Sterling Silver and Yellow Gold Plated Accent  
Bead Chain*

18" (45cm) 24" (61cm) 30" (76cm)  
CH046 CH062 CH047



*Rose Gold Plated Sterling Silver  
Intermittent Bead Chain*

18" (45cm) 24" (61cm) 30" (76cm)  
CH004 CH051 CH005



*Sterling Silver and Rose Gold Plated Accent  
Bead Chain*

18" (45cm) 24" (61cm) 30" (76cm) 35" (89cm)  
CH019 CH056 CH020 CH021



*Yellow Gold Plated Sterling Silver  
Popcorn Chain (Thick)*

18" (45cm) 24" (61cm) 30" (76cm)  
CH040 CH061 CH044



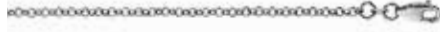
*Yellow Gold Plated Sterling Silver  
Belcher Chain*

16-18" (40-45cm) 24" (61cm) 30" (76cm)  
CH010 CH053 CH011



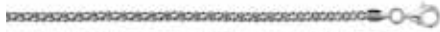
*Sterling Silver  
Bead Chain*

18" (45cm) 24" (61cm) 30" (76cm)  
CH016 CH055 CH017



*Sterling Silver  
Belcher Chain*

16-18" (40-45cm) 24" (61cm) 30" (76cm) 35" (89cm)  
CH025 CH058 CH026 CH027



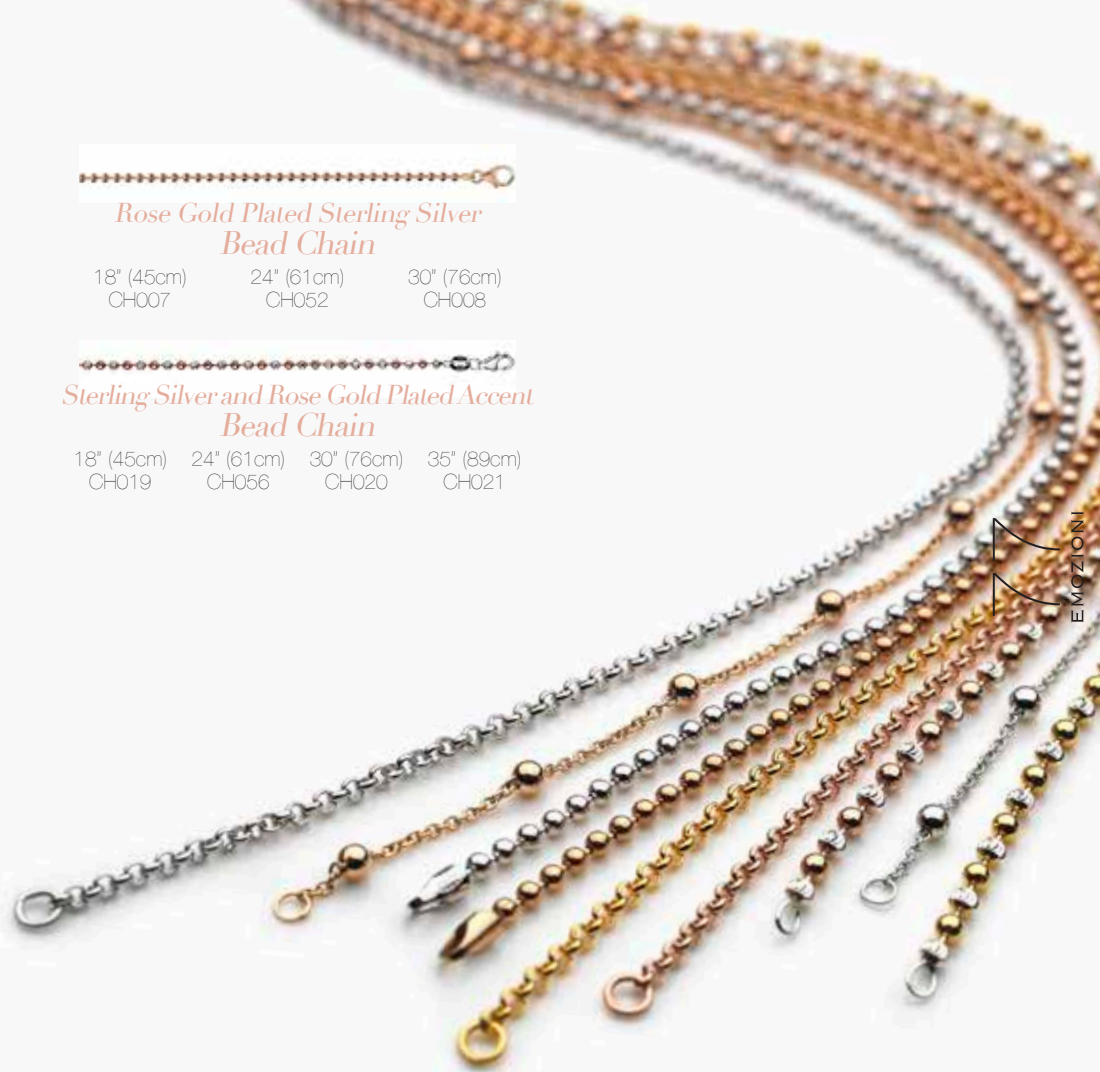
*Sterling Silver  
Popcorn Chain (Thick)*

18" (45cm) 24" (61cm) 30" (76cm)  
CH028 CH059 CH029



*Sterling Silver  
Intermittent Bead Chain*

18" (45cm) 24" (61cm) 30" (76cm)  
CH001 CH050 CH002



EMOZIONI



# Sumptuous

## gift-wrap

The sumptuous Emozioni collector box is truly irresistible. THE PERFECT SANCTUARY for your most versatile jewellery collection.

TO ENSURE A LONG LASTING FINISH, ALL EMOZIONI JEWELLERY IS EITHER RHODIUM PLATED OR 18CT GOLD PLATED



# EMOZIONI

HOT DIAMONDS

[www.emozioni.com](http://www.emozioni.com)

T: 0118 975 3331 - F: 0118 975 4200

E: [cs@hdgroup.com](mailto:cs@hdgroup.com)